



WHEELS & WHEEL ACCESSORIES

FOR JEEP CJ & WRANGLER MODELS

WE MAKE JEEPS ROCK!



WHAT IS HUBCENTRIC AND WHY IS IT IMPORTANT?

Nearly all OEM wheels are designed to be hub-centric. The automaker designs an OEM wheel to fit on a certain car or range of cars. The center bore of the wheel is sized to fit perfectly onto the axle of that car. This is a hub-centric connection, as the wheel is centered by its connection to the axle hub. The lugnuts hold the wheel firmly to the mounting plate, but it is the wheel-to-axle connection that actually holds the weight of the car. This is quite an important distinction, as the lugnuts are designed to handle lateral forces that push the wheel away from the mounting plate. The forces that the hub and center bore connection are designed to withstand – the weight of the car forcing downward and impacts forcing upward – are at right angles to the forces that the lugnuts are designed for.

When you choose a non-hub-centric wheel, the forces will need to be handled by the lugnuts and studs, which can lead to premature wear and unwanted vibrations.

BUYING WITH CONFIDENCE

All of our wheels are covered by an industry leading 5 year warranty providing end customers with repair or replacement of parts subject to certain common exclusions. Actual Limited Warranty terms are included with your product at time of purchase. Copies of sample Limited Warranties are available through our web-site (Omix-ADA.com) or through our customer service hotline.



WHEEL ADAPTERS & SPACERS

Rugged Ridge® and Alloy USA® Wheel adapters and spacers	Part #
07-16 Wrangler JK, Alloy USA Wheel Spacer, 1.50" 5 on 5.0"	11300
84-06 Wrangler YJ, TJ, Cherokee XJ Alloy USA Wheel Adapter, 1.25" 5 on 4.5"	11310
84-06 Wrangler YJ, TJ, Cherokee XJ, Rugged Ridge Wheel Spacers, 1.25", 5 x 4.5"	15201.02
07-16 Wrangler JK, Rugged Ridge Wheel Spacers, 1.5", 5 x 5"	15201.05
84-06 Wrangler YJ, TJ, Cherokee XJ, Rugged Ridge Wheel Spacers, 1.5", 5 x 4.5"	15201.08
55-86 Wrangler CJ Rugged Ridge Wheel Spacers, 1.5", 5 x 5.5"	15201.09
84-06 Wrangler YJ, TJ, Cherokee XJ, Rugged Ridge Wheel Adapters, 1.375", 5 x 4.5 to 5 x 5.5"	15201.10
84-06 Wrangler YJ, TJ, Cherokee XJ, Rugged Ridge Wheel Adapters, 1.375", 5 x 4.5 to 5 x 5"	15201.11



Durable powdercoat finish that withstands even the toughest conditions

Gunmetal
15302.30

Satin Black
15302.01

DRAKON ALLOY WHEELS

Bring the look of your Jeep® to a whole new level with our Drakon Alloy Wheels from Rugged Ridge! These wheels offer a new, sleek design created to appeal to 07-16 Jeep Wrangler owners (97-06 Wranglers require an adapter kit part no. 15201.11). Rugged Ridge designed and built this new wheel from cast aluminum alloy and made it available in two stunning finishes to create a unique appearance; satin black and gunmetal. Designed to appeal to even the most hardcore Jeep enthusiasts, the DOT-approved Drakon wheels offer the best fit and style possible, featuring 4.53-inch backspacing and a 2200-pound load rating on the JK's 5-on-5 inch bolt pattern as well as a center cap for a complete look. These wheels feature a hub-centric design, meaning this wheel will center perfectly every time. Limited lifetime structural warranty and one year finish warranty (see warranty information for details and limitations). Patent No. D701, 156.

WHEEL OPTIONS

Rugged Ridge® Hub-Centric Drakon Alloy Wheels for 07-16 Wrangler*	Part #
07-16 Wrangler JK, 17"x9" Drakon Alloy Wheel, Satin Black	15302.01
07-16 Wrangler JK, 17"x9" Drakon Alloy Wheel, Gunmetal	15302.30
07-16 Wrangler JK, 18"x9" Drakon Alloy Wheel, Satin Black	15302.02
07-16 Wrangler JK, 18"x9" Drakon Alloy Wheel, Gunmetal	15302.31
07-16 Wrangler JK, 20"x9" Drakon Alloy Wheel, Satin Black	15304.01
07-16 Wrangler JK, 20"x9" Drakon Alloy Wheel, Gunmetal	15304.30

* 97-06 Jeeps require an adapter kit part no. 15201.11

Wheel adapters and spacers see pg. 2





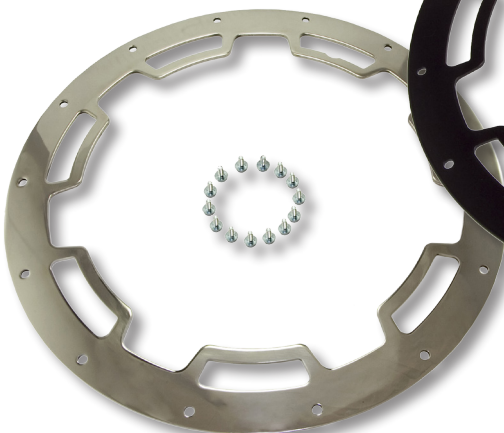
Durable powdercoat
finish that withstands even
the toughest conditions

*Available in
17", 18" & 20"*



Modular center cap available for
17" 18" and 20" wheels in full center or
low profile

**Polished Stainless
Steel Rim Protector**



**Satin Black
Rim Protector**





XHD ALUMINUM WHEELS

Rugged Ridge® is proud to offer the toughest design in custom wheels for 07-16 Wranglers (97-06 Wranglers require an adapter kit part no. 15201.11). This hub-centric design exactly centers the wheel over the hub providing proper balance, clearance for brake rotors, steering components and suspension. A better fit with no wheel vibration! Stainless steel button-head socket cap screws around the perimeter of the outer wheel face give a great 3-piece look, and you can accessorize with our optional trim ring. Available in five finishes: satin black powder coated, satin black powder coated with machined lip, silver powder coated, dual-stage polished chrome, and gunmetal. The durable powder coat gives an ultra-hard finish for long life and a great look. The chrome finish uses a dual-stage process to give a deep reflective mirror-like shine that commands attention. Rugged Ridge wheels have been independently tested and certified to meet/exceed SAE J2530 standards for wheel strength and durability. Backspacing is 4.53 inch with a -12mm offset. Limited lifetime structural warranty and one year finish warranty (see warranty information for details and limitations).

WHEEL OPTIONS

XHD Aluminum Wheels for 07-16 Wrangler*	Part #
07-16 Wrangler JK, 17"x9" Wheel, Satin Black	15301.01
07-16 Wrangler JK, 17"x9" Wheel, Satin Black with Machined Lip	15301.10
07-16 Wrangler JK, 17"x9" Wheel, Silver	15301.40
07-16 Wrangler JK, 17"x9" Wheel, Chrome	15301.20
07-16 Wrangler JK, 17"x9" Wheel, Gunmetal	15301.30
07-16 Wrangler JK, 18"x9" Wheel, Satin Black	15305.01
07-16 Wrangler JK, 18"x9" Wheel, Silver	15305.40
07-16 Wrangler JK, 18"x9" Wheel, Gunmetal	15305.30
07-16 Wrangler JK, 20"x9" Wheel, Satin Black	15306.01
07-16 Wrangler JK, 20"x9" Wheel, Silver	15306.03
07-16 Wrangler JK, 20"x9" Wheel, Gunmetal	15306.02
Center Cap, Replacement Part for 17" XHD Wheels	15201.50
Modular Center Cap, Replacement for 17" 18" 20" XHD Wheels	15305.51

* 97-06 Jeeps require an adapter kit part no. 15201.11

Wheel adapters and spacers see pg. 2

RIM PROTECTORS FOR XHD WHEELS

Rim Protectors for XHD Aluminum Wheels	Part #
Rim Protector, 17", Polished Stainless Steel	15250.01
Rim Protector, 17", Satin Black	15250.02
Rim Protector, 18", Black Stainless Steel	15250.03
Rim Protector, 20", Black Stainless Steel	15250.04





Satin Black
15303.90

Satin Gunmetal
15303.92

Recessed valve stem
pockets for advanced
protection on trails

JESSE SPADE WHEELS

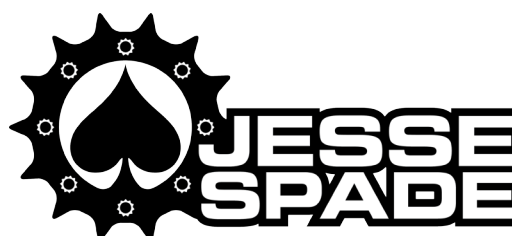
Jesse Spade, a skilled fabricator and designer from Atlanta with a heritage in the off-road and hot-rod industry, engineered this latest wheel for Rugged Ridge®. Designed to appeal to even the most hardcore Jeep® enthusiasts, the new Jesse Spade Wheel from Rugged Ridge® is offered in two finishes of satin black and satin gun metal. Offering the best styling and fit possible this 17x9 inch hub-centric wheel features a 5x5 inch bolt pattern, -12 mm offset, 4.53 inch backspacing, and 71.5 mm center bore (97-06 Wranglers require an adapter kit part no. 15201.11). This wheel also features exclusive valve stem pockets which protect the valve stem from potential off-road damage. The Jesse Spade Wheel was built to deliver the handling that your rides performance requires while offering the best design and quality possible.

WHEEL OPTIONS

Jesse Spade® Hub - Centric 17x9 Wheels for 07-06 Wrangler*	Part #
07-16 Wrangler JK, Jesse Spade® Wheel, 17x9 inch, Satin Black	15303.90
07-16 Wrangler JK, Jesse Spade® Wheel, 17x9 inch, Satin Gunmetal	15303.92

* 97-06 Jeeps require an adapter kit part no. 15201.11

Wheel adapters and spacers see pg. 2





STEEL WHEELS

HUBCENTRIC STEEL WHEELS

An upgrade from ordinary steel wheels, the Rugged Ridge design features five retro-style kidney shaped holes and a durable gloss black finish, tough enough to withstand trail duty. The hub-centric design ensures the wheel is precisely centered upon installation, minimizing stress on wheel studs and eliminating the added road vibration common with non-hub-centric designs. Available with or without a molded ABS center cap, offering Jeep® owners two different looks with the same wheel.

WHEEL OPTIONS

Hubcentric Steel Wheels	Part #
07-16 Wrangler JK, 17 x 9-inch, Gloss Black, w/out Center Cap	15500.76
07-16 Wrangler JK, 17 x 9-inch, Gloss Black, w/ Center Cap	15500.78
Center Cap for Steel Wheels	15500.90



STEEL D-WINDOW WHEELS

Legendary looks with brutally epic strength. Each Rugged Ridge® Steel D-Window wheel is stamped from heavy gauge steel and powder coated with a durable black finish. Our wheels have been engineered, tested and certified to meet and exceed the strenuous SAE J2530 standards for wheel strength and durability. Turning a million cycles at double their load capacity, these wheels are sure to withstand off-road abuse. All Rugged Ridge® Steel D Window wheels include a FREE polished center cap!

WHEEL OPTIONS

Steel D-Window Wheels	Part #
07-16 Wrangler JK, Black, 17X9, 5 x 5"	15500.70
97-06 Wrangler TJ, Black, 15x8, 5 x4.5"	15500.01
87-95 Wrangler YJ, 15 x 10, Black, 5 x 4.5"	15500.02
55-86 Wrangler CJ5, CJ6, CJ7, CJ8, Black, 15 x 8, Black, 5 x 5.5"	15500.10





WWW.RUGGEDRIDGE.COM

Part# 12508.03 Printed in the USA[©] Copyright 2015 Omix-ADA, Inc.

Jeep[®], Wrangler[™], CJ[™], TJ[™], and Jeep[®] grille design are a registered trademark of FCA US LLC, Omix-ADA[®] is not affiliated with FCA US LLC